

ENERGY  
MANAGEMENT  
MADE EASY  
WITH **SKYBOX**



*Expandable*



*Plug + Play\**



*Local support  
with  SkyCare™*



POWER YOUR LIFE

SkyBox makes getting your freedom from the power grid easy and straightforward.





Acting as a central 'brain,' the SkyBox manages incoming power between your solar and batteries.

By storing excess energy in the internal batteries, SkyBox creates a reliable electricity supply.



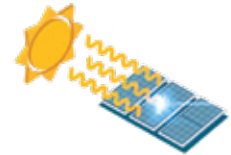
HYBRID SKYBOX

# 10 powerful features



### Reduce dependency on the grid

The SkyBox can help reduce your dependency on the grid and bring your bills down.



### Wide range of compatibility

Automatically manages energy input from solar, wind and hydro sources gives limitless potential.



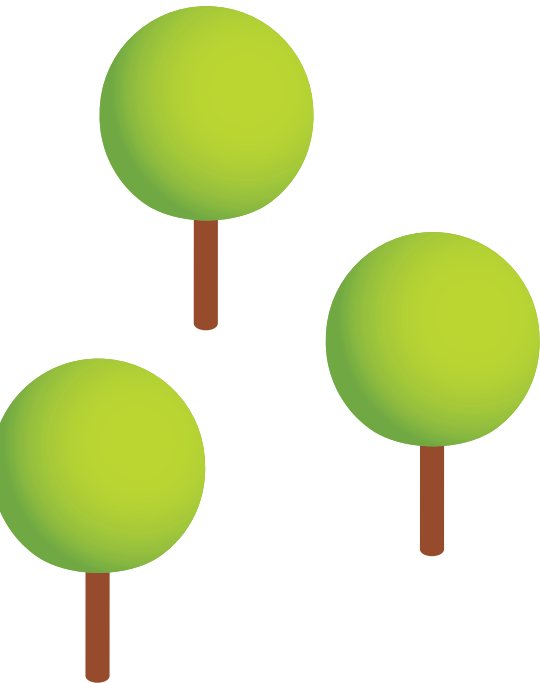
### 10-year replacement warranty

The SkyBox comes with a massive 10-year warranty.



### Get to know the SkyBox range

Different model sizes are available based on your power requirements.



THE SKYBOX RANGE





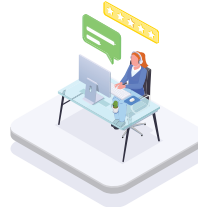
### Huge storage capability

It stores power for later use for up to 30kW/h, so you're never in the dark.



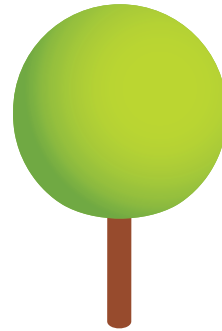
### No assembly required

The SkyBox comes prewired and preprogrammed for easy installation.



### Best aftercare in Australia

Sky Energy provides SkyCare, an aftercare service, optional remote operating features and monitoring, and a 10-year cost recovery warranty.



### Future proof with easy expandability

If more power is needed, it is simple to add on, making it the most flexible and future proof option.



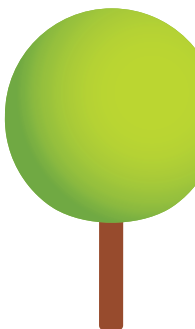
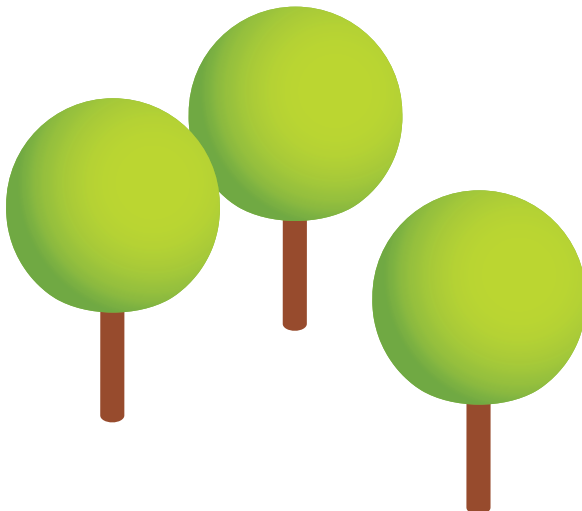
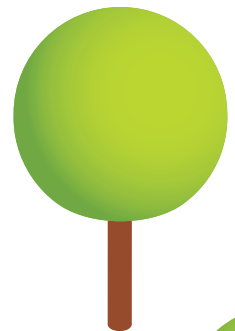
### Plug and play install for electricians

The great thing about the SkyBox is that your local sparky can install it, and they don't require an off-grid licence to do so.



### Proudly Aussie made

Every SkyBox is put together and tested by our engineers in our headquarters in Victoria before being shipped out.





# SkyBox is built Aussie tough

The SkyBox is designed for both indoor and outdoor use and provides enormous battery capacity in one cabinet.

Rigorously tested in the demanding Australian conditions, so you know it will handle everything you throw at it and more. When you want to expand, simply add more batteries to suit your storage requirements age requirements.

## SKYBOX FEATURES

### Solar Compatible

The SkyBox is compatible with both new or existing grid-tie inverters. Alternatively, a generator can be connected to achieve an off grid experience.

### No Break Supply

The SkyBox takes over the supply to the connected loads in a grid failure or when generator power is disconnected. This happens so fast (less than 10 milliseconds) that computers and other electronic equipment will continue to operate without disruption.

### Off-Site Monitoring

When connected to the internet, SkyBox can be accessed remotely, and settings can be changed.



### Maximum Power

Up to 16 Hybrid SkyBoxes can operate in parallel to achieve higher power output. 16 units, for example, will provide 128 kW output power with 3040 Amps battery charging/discharging capacity.

*\*Based on 8kW model.*

### SkyCare™ Monitoring

Our free remote monitoring app will display all your system data in a comprehensive graphical format. System settings can be changed remotely via the portal. Alarms can be received by e-mail.





Power your home.  
Your shed.  
***Or both.***

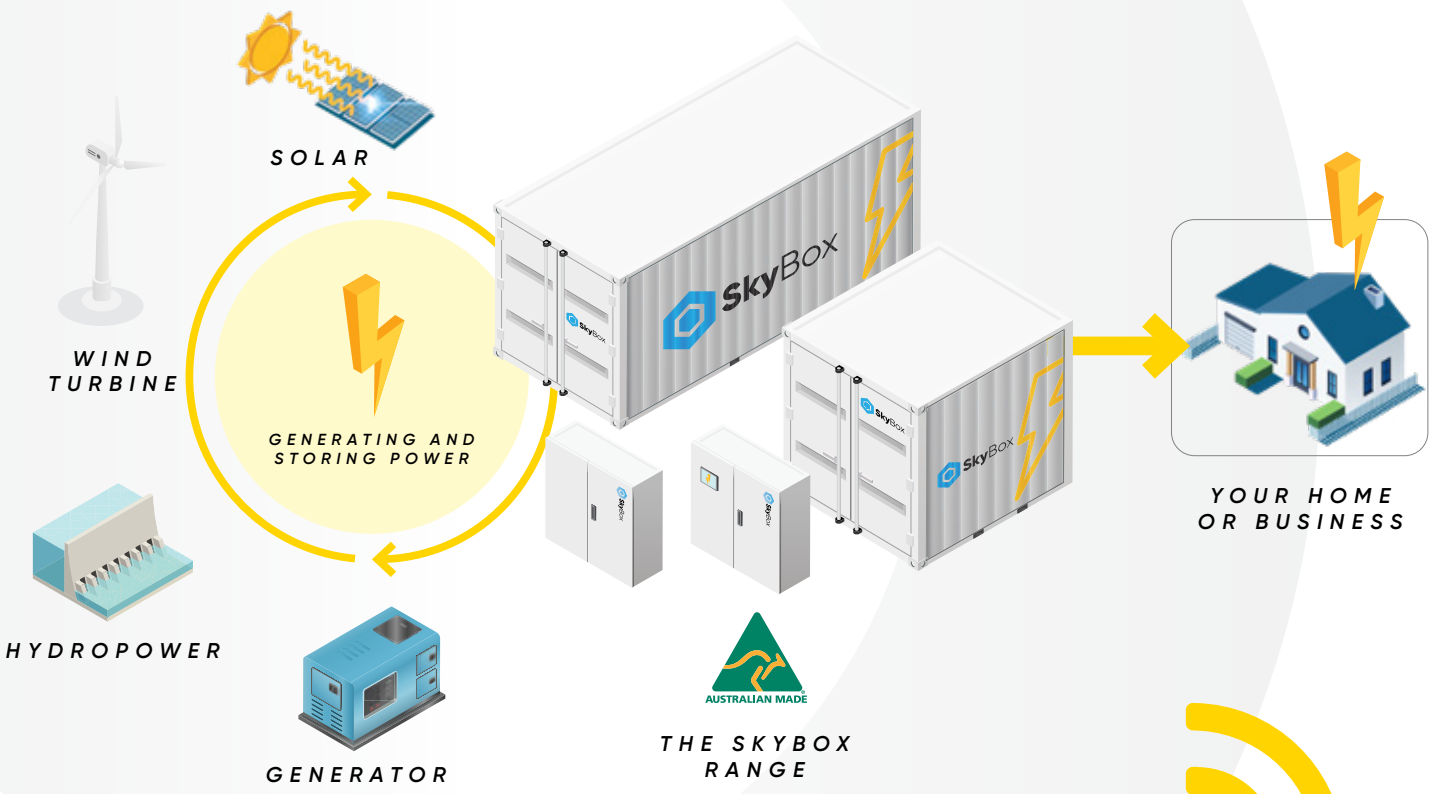


# The easiest way to reduce grid dependence.

Choose your power sources, and SkyBox will create a virtual power grid.

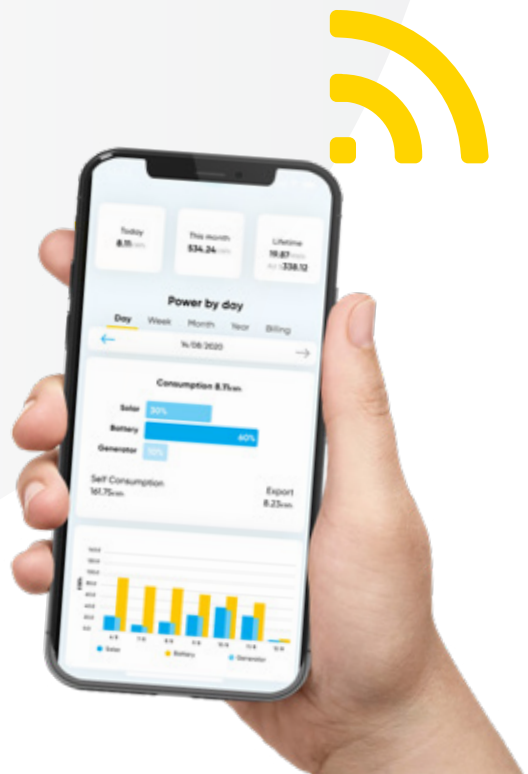
The Brains of the system, the SkyBox, acts as a conductor in the orchestra. It balances and manages power flow from your selected power source and provides a steady 230V of electricity to your home or business.

You can expand your SkyBox as your needs change and grow, delivering you outstanding flexibility and peace of mind.



## Monitoring

No matter if you're on the move working hard, or relaxing on your couch. With our specifically designed monitoring app, you have the power to see what's going on anytime, anywhere, as long as you have 4G connection.







# Plug and Play.



## 01. Customize

Get the maximum potential out of your SkyBox when we customise it for your lifestyle and usage.



## 02. Build

Our team of electricians and engineers carefully build a SkyBox to your specifications and test thoroughly.

Then it's a teary goodbye as the SkyBox leaves our Victorian headquarters as it begins its adventure to its new home.



## 03. Install

Your SkyBox arrives safely to your property, then simply ask your local sparky to come and plug it in. Start powering your life!

### Easy connection



Energy Source in



Power out

HYBRID SPECIFICATIONS



AUSTRALIAN MADE

SkyBox gives everyone freedom and independence from the power grid.

Acting as a central 'brain,' the SkyBox manages incoming power from your solar, wind, or hydro generators.

Balancing these power sources and storing excess energy in the internal batteries, SkyBox creates a reliable off-grid electricity supply.

**10 YEAR**

WARRANTY

**+++ EXPANDABLE**



**5kW**



**8kW**

Transfer Switch	35A	50A
Max AC Input (A)	35A	50A

**INVERTER**

Output (V)	Output Voltage: 230VAC. Frequency 50Hz	
Rated AC Output Active Power (W)	5000W	8000W
Max AC Output Active Power (W)	5500W	8800W
Peak Power 10s (W)	6000W	12000W
Max AC Output Current (A)	21.7A	34.8A
Maximum efficiency	97.6%	97.6%

**CHARGER**

Max Charging Current	120	190
Max Discharging Current	120	190

**SOLAR**

Max PV Power*	7500W	12000W
Max Open Circuit Voltage	500V	500V
Max PV Short Circuit Current	19.5A	39A
Efficiency	99.9%	99.9%
MPPTs (Strings per Tracker)	2 (1+1)	2 (2+2)

**BATTERIES**

	<b>PYLONTECH</b>	<b>BSLBATT</b>
Nominal Voltage	48V	
Nominal Capacity (Wh)	4800 (Wh) multiplied by number of modules	5120 (Wh) multiplied by number of modules
Usable Capacity (Wh)	4560 (Wh) multiplied by number of modules	4966 (Wh) multiplied by number of modules
Max No. Modules	6	6
Max Capacity	<b>PYLONTECH</b> 28.8kWh	<b>PYLONTECH</b> 28.8kWh
	<b>BSLBATT</b> 30.72Wh	<b>BSLBATT</b> 30.72Wh
Working Temperature	0°C–50°C	
Design Life	10+ Years	
Cycle Life	>6000 Cycles	
Authentication Level	IEC62619/CE/UN38.3	
Warranty	10 Years to 60% retention	

**MONITORING**

WiFi	Yes
Ethernet	Yes

**ENCLOSURE**

Colour	White
Protection Category	IP54
Dimensions (h x w x d)	1072 x 1354 x 601

\* Additional Solar power can be connected, the SkyBox will only utilise the specified amount  
 2 Size is an approximation only and may vary depending on parts available  
 3 Size of cabinets is an approximation only and may vary depending on stock available and size of system Off-Grid Certified meaning the SkyBox has capabilities for renewable energy and generator inputs. SkyBox creates a power supply where no grid input or referencing is required.  
 4 Subject to change.



# Blackout protection? We got you.

We built the SkyBox around reliability so you can live comfortably. Never worry about being stuck in a blackout. You'll be able to power your home from the renewable energy source and battery system, keeping everything running.

HYBRID SPECIFICATIONS



FEATURES

**Protection** Built to IP54 protection standards

**Standard** IEC62208, IEC/EN/AS60529

**Material** Body: 1.5mm galvanised steel sheet  
 Gland Plate: 1.5mm galvanised steel sheet  
 Door: 1.5mm galvanised steel sheet  
 Device Mounting Plate: 1.5mm galvanised steel sheet  
 Seal: EPDM Rubber

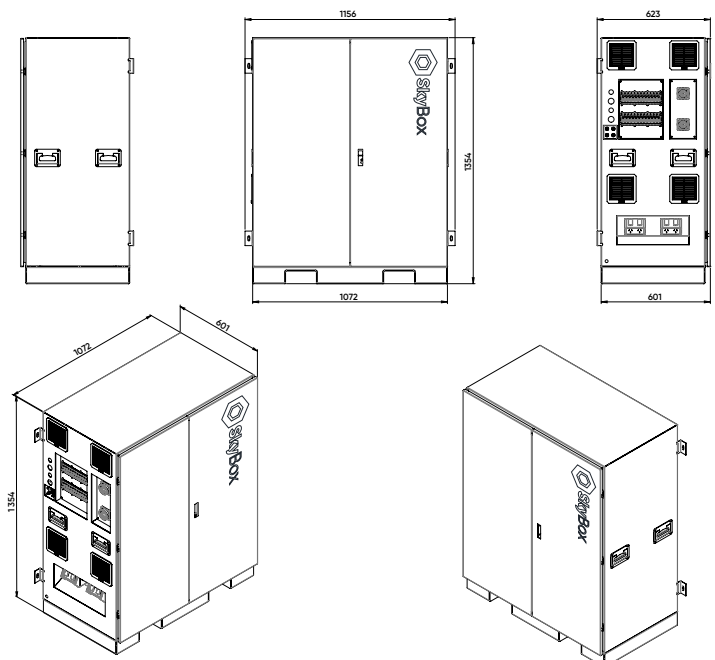
**Body** The robust monoblock body is fabricated using 1.5mm galvanised steel sheet. Flat face sealing surfaces are provided to increase seal life. Pre-fitted blind nuts are incorporated to accommodate mounts and accessory fasteners to eliminate drilling and retain IP rating. Integral device plate mounts and M6 earth stud is provided.

**Double Doors** The robust surface mounted door is fabricated using 1.5mm galvanised steel sheet and incorporates concealed removable hinges with captive pins. The door is designed for a 110° opening. Each door contains integral cable management rail studs, M6 earth stud.

**Seal** Pinch weld EPDM replaceable seal

**Lock** 3 point locking system with key-lock swing handle.

DIMENSIONS





## FAQs

### Who can install the SkyBox for me?

Any licensed electrician can install the SkyBox.

### What is SkyCare?

SkyCare is a support team based in Victoria that you and your electrician can call with any technical questions about the SkyBox, this ensures you have an award-winning team behind your installation to ensure you have peace of mind with your power setup!

### I have a generator in the shed, can I hook it up to the SkyBox?

Yes, though the SkyBox has specific requirements around voltage and receiving 'clean' power from a generator, as long as your generator puts out 50Hz and close to 240V, then it can easily be wired into the SkyBox. SkyBox is pre-programmed for this feature, to make it easy.

### Can it charge my electric car/tractor?

Yes, the batteries can be connected to a charger and then charge vehicles and appliances.

### If I want to move my shed in 12 months is it easy to shift the SkyBox?

The SkyBox is easy to install and easy to uninstall by a licensed electrician, this means you can shift the SkyBox as you require.

### Do any rebates apply to the SkyBox?

Depending on the region and state your SkyBox may be eligible for government subsidy.

### Can I install the SkyBox outside?

Yes, when the door is closed and the cables are installed according to the instructions, the SkyBox carries an IP54 rating, meaning it is weather resistant.

### What's the depth of discharge of the batteries?

The Lithium batteries in the SkyBox have a 95% depth of discharge. This means you can use 95% of the stored power within the batteries. This is compared to the 60% usable capacity you usually get when using products like lead-acid batteries off the grid. This gives you a lot more endurance and power capacity.

### Can I expand the SkyBox down the track?

Yes, you can expand the Sky Box's capabilities almost to infinity and beyond.



\*OFF GRID MODEL SHOWN

ABOVE: THE TEAM AT TATHRA ECO CAMP STANDING IN FRONT OF THEIR SKYBOX



## If you have any questions or are ready to build your very own SkyBox, please contact us today.

With the help of our SkyBox sales team and engineers, we will custom build a reliable future proof solution together. Get ready to power your life with the SkyBox.

**Phone:**

1300 787 488

**Email:**

[team@skyenergysystems.com.au](mailto:team@skyenergysystems.com.au)







[SKYENERGY.COM.AU/SKYBOX](https://www.skyenergy.com.au/skybox)

DESIGNED AND DEVELOPED BY  SkyEnergy